

# **Parks and Countryside Sites Team**

**Carolyn Healy**  
**Parks and Countryside Sites Manager**



## What we do...

- Site management and development
- Community involvement
  - Consultation
  - Management groups
  - Volunteers
- Education & interpretation
- Strategic open space management
  - Planning
  - Advice & support



# The Team



- 24 staff plus casuals
- The Mere site team
- Severn Valley Country Park site team
- Ranger Service
- Community Green Space Team
- Large volunteer network

# Our parks

- 131 sites including large country parks, recreation grounds, natural areas, play areas and amenity green spaces
- Severn Valley Country Park and The Mere have visitor centres and site based staff



# Our Parks

- Sites managed for public recreation and enjoyment including walking, discovering nature, fishing, formal sports and play
- Many sites are important for nature conservation, heritage and landscape



# Promote Access

- Paths maintained to good standard
- Minimum access standards
- Circular routes on sites
- Long distance routes link sites
- Guided walks



# Community involvement



- Site management committees
- Consult users and local communities on site developments and management plans

# Volunteers

- Mid week groups meet at The Mere and Severn Valley Country Park
- Weekend volunteers
- Volunteer Rangers
- Work placements
- Specific project volunteers
- Tree Wardens





# Education and Interpretation

- Schools education programme
- Annual events programme
- On site interpretation
- Publications
- Websites

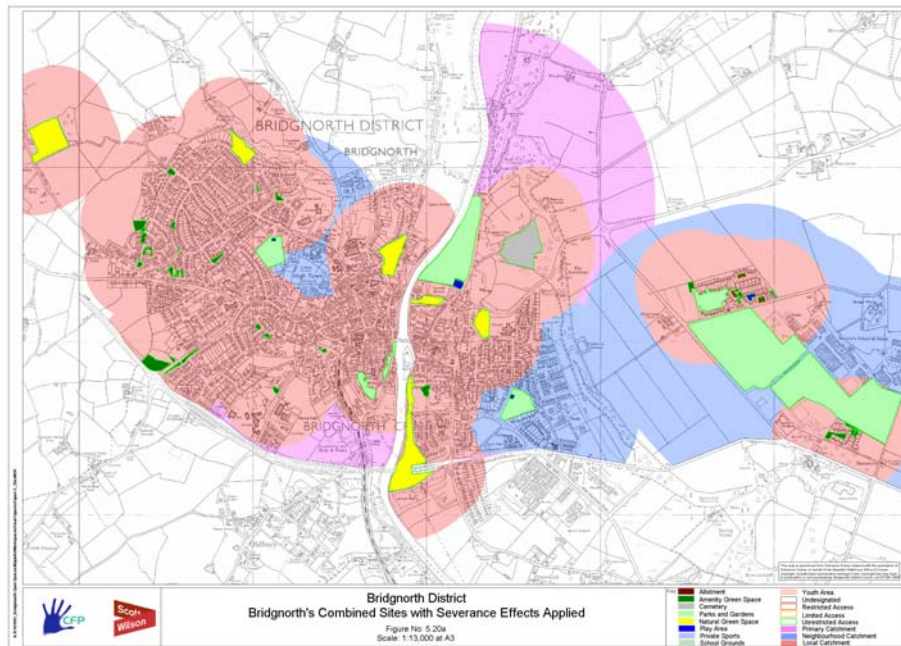


# Play Development

- 33 play areas owned by Shropshire Council
- Lots more town and parish council sites
- Over £2 million investment programme
- Shropshire Play Partnership
- Promoting the value of play



# Strategic Open Space Planning



- Greenspace Strategy
- New housing developments provide opportunities for new open space or investment in existing open space

# Parks and Countryside Sites Team

## Contacts

- General Enquiries – 01743 255957
- Severn Valley Country Park – 01746 781192
- The Mere, Ellesmere – 01691 624280
- [parcs@shropshire.gov.uk](mailto:parcs@shropshire.gov.uk)